



Coming to nursery during Covid-19

Parents' Guide

Subject to staffing and
Government and Local
authority guidelines

Please keep 2 metres away from staff at all times

Please don't risk your child's place at nursery by not
following the Nursery & Government guidelines

Welcome

The children will be excited to see their friends again and they will continue to play with each other as they always did, because of the age of the children they will not be expected to social distance. However they will be accommodated in bubbles of age groups, to minimise movement of children and staff where possible.

Please be reassured that all nursery staff will be following the social distancing guidelines, any visits from new parents who are settling in are held in rooms , away from the main playrooms.

We will continue to update policies and procedures in line with Government and Local Authority guidance.

Despite every effort on our behalf to ensure that our children and staff are safe, every child in the setting will be admitted with the understanding that parents have understood the risks that are involved and they are aware and agree to adhere to our safety guidelines. Should we feel that parents are not adhering to these guidelines then, under the current circumstances, we will have to ask them to keep their children at home until situations change.

Patience, tolerance and flexibility is key for the safety of everyone in these difficult circumstances and we thank you for being kind and respectful to our team at all times

Please keep 2 metres away from staff at all times

Please don't risk your child's place at nursery by not following the Nursery & Government guidelines

Our safety measures



Drop off and Pick ups

If we find times of day become too busy we will be staggering drop off and pick up times to ensure social distancing is maintained and so that not all children enter and leave at the same time.

Please talk to your children and prepare them for their return to nursery so they are aware that we will meet them at the porch door and their parents are unable to come into nursery. Staff will wear face coverings and we ask parents/grandparents to also wear a face

covering and to keep 2 metres distance from staff members and other parents

Please limit the drop off and collection to one parent and the child that is coming to nursery.

Parents' Queue

Parents will be expected to adhere to the social distancing rule outside the nursery premises keeping 2 metres apart.

Parents will not be permitted to gather outside the nursery. You will be advised if there is a different entrance for your child.

Please keep 2 metres away from staff at all times

Please don't risk your child's place at nursery by not following the Nursery & Government guidelines

Our safety measures

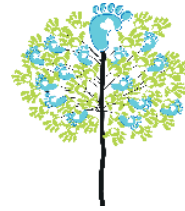


Cleaning

We will be undertaking extra and regular cleaning procedures throughout the day to minimise the risk of any germs spreading.

We have a new pram shelter for your use... please consider a bike lock for your pushchair as items are left at your own risk (we are unable to store prams and carseats in-house .

Please keep 2 metres away from staff at all times



Transport

Please encourage your child to leave belongings such as toys at home.

Parents are requested to avoid using public transport where possible. We advise you to come by car, walking or cycling.

If your only option is to use public transport then you will be required to adhere to the social distancing rules ensuring that you remain 2 metres away from others.

Please don't risk your child's place at nursery by not following the Nursery & Government guidelines

Updated 11.4.21

Our safety measures

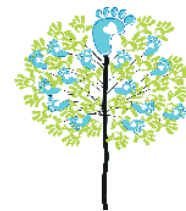
It is mandatory to wear a face covering on public transport.



Events

We will cancel all social events which include our yearly presentations, trips and graduations for the foreseeable future. There will be no college students training in our setting at this time.

Breakfast Club and Afterschool Club will not operate to avoid mixing other children with those at nursery.



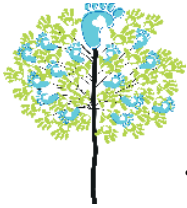
Meals

Bubbles of children are spaced out so that social distance can be maintained as much as possible. We will continue to provide hot cooked meals. Those children who bring packed please can we that is in a **wipeable plastic container**. The children will eating directly from their lunch boxes so please ensure that they are able to open any packet that they may have or that have been opened already.

Please keep 2 metres away from staff at all times

Please don't risk your child's place at nursery by not following the Nursery & Government guidelines

Our safety measures



The environment

Children will play outdoors as much as possible in all weathers. Please can you child arrive at nursery with sun cream already applied. The team will re-apply at lunchtime. In warmer weather the children may sleep and eat outside.

In colder weather please ensure your child has hat/gloves and warm coat/overalls for outdoor play. Windows are open at nursery to ensure ventilation and to aid dispersal of droplets/aerosols , although we continue to heat the rooms, your child will benefit from wearing an extra layer of clothing.

Hand washing

Children will be encouraged to wash their hands throughout the day as per Government guidelines. Please can we ask you to wash your child's hands before you leave home, they will then be encouraged to wash them again on arrival.

Hand sanitiser is available in all communal areas and on entrance to nursery for all staff and parents to use throughout the day.

Please keep 2 metres away from staff at all times

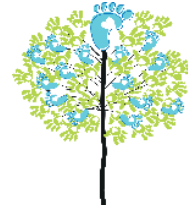
Please don't risk your child's place at nursery by not following the Nursery & Government guidelines

Our safety measures



Promoting good hygiene

The nursery will promote regular good hygiene materials to ensure they are maintaining a good hygiene.



PPE – Personal Protective Equipment

The nursery will ensure PPE is provided (such as disposable gloves, and aprons and face coverings.)

Face coverings ; parents please wear a face covering when bringing/collecting your child Staff are wearing face coverings in all communal areas and when working closely with staff from other bubbles.

Staff will also wear face coverings at handover and when meeting visitors .

Staff may wish to wear face coverings at other times during the day and this will be respected.

Please keep 2 metres away from staff at all times

Please don't risk your child's place at nursery by not following the Nursery & Government guidelines



Our safety measures...Children that become unwell.... Stay at home

As we know the coming months are typically full of coughs and colds and we expect to be making regular contact with parents regarding coughs and raised temperatures. We ask in advance that parents respect we have Government advice to follow and will be requesting covid tests (or 10 days absence) at **any event** of these symptoms - this will be frustrating for us all and we will appreciate your patience and understanding at all times - none of us know 'it is not covid 19'. The test can be a quick turnaround and currently we have a local test centre at Seven Brethren. Children with symptoms must have a PCR Covid test, home test lateral flow test kits are not for children (and not for anyone with symptoms). We ask for proof of results following your child's test.

If you or anybody in your family becomes unwell with a new continuous cough, temperature or loss of taste and smell, then the whole family will need to isolate for 10 days in line with Government guidance. This can be arranged through the NHS website or by calling 119. A child then can return to nursery once proof of a negative PCR test has been obtained, when their temperature has been normal for 48 hours without medication. If your test is positive then the Government's track and trace service will advise of our isolation. Children and staff who are in that nursery bubble will be advised to also isolate for 10 days. If any child becomes unwell with the above symptoms they will be sent home.

Whilst the child is awaiting collection, they will be placed in isolation with a member or staff (In full PPE) until they are picked up, with siblings
It is vital that we are able to contact you straight away and that collection can be quickly arranged, please ensure your contact details are up to date.

Children are only permitted into nursery if 100% well. Children who need Calpol/paracetamol/ibuprofen must stay at home, please avoid giving your child such medicines 6 hours before nursery.

Other exclusions;

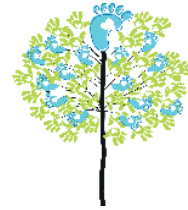
- Vomit/diarrhoea to stay at home until 48 hours clear of all symptoms
- Please ensure we are aware when your child has had vaccinations, to be ready for side effects
- Information regarding teething can be found on Covid in Early Years Settings document (Gov.UK)

Any children living with person who is at risk of severe illness, or an extremely vulnerable person who is shielding from Covid-19, should stringently follow the guidance on social distancing and minimise contact outside the home, such children are advised not to attend nursery unless your GP has confirmed it is safe to do so.

Please keep 2 metres away from staff at all times

Please don't risk your child's place at nursery by not following the Nursery & Government guidelines

Our safety measures



Parent & Staff communication

Face to face communication between staff and parent will be minimal and meetings with parents can be arranged via phone call/Zoom or in our summer house in the garden.

Clothing

Staff will change clothing on arrival and when they go home.

Please ensure hygiene is maintained and that children come in with fresh, clean clothes daily. Please ensure packed lunch boxes/bags are also cleaned before coming in.

Please keep 2 metres away from staff at all times

Please don't risk your child's place at nursery by not following the Nursery & Government guidelines

Our safety measures

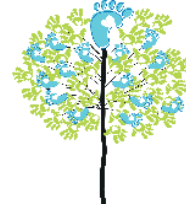


Bags and Toys

Children must not bring in toys from home. All parents will be required to leave a clearly labelled bag with sufficient clean clothes at nursery. These bags will be kept at nursery. If children need to be changed their clothes will be sent home in plastic bags to be washed. To minimise the risk of transmission we ask that as many items stay at nursery as possible, such as drinks bottles, wellies and sun hats (please let us know if you need to use our spare items)

Comforters such as teddies are of course a different matter and can be sprayed with disinfectant on arrival!

Please keep 2 metres away from staff at all times



Helpful links

<https://www.gov.uk/government/publications/coronavirus-covid-19-early-years-and-childcare-closures>

<https://www.gov.uk/guidance/nhs-test-and-trace-how-it-works>

<https://www.gov.uk/government/publications/what-parents-and-carers-need-to-know-about-early-years-providers-schools-and-colleges-during-the-coronavirus-covid-19-outbreak>

<https://www.gov.uk/government/publications/guidance-on-shielding-and-protecting-from-covid-19/guidance-on-shielding-and-protecting-extremely-vulnerable-persons>
<https://www.devon.gov.uk/coronavirus-advice-in-devon/#children>

Please don't risk your child's place at nursery by not following the Nursery & Government guidelines